

座 標 求 積 表

Table with 4 columns: 地番, 測点, Xn, Yn, (Xn+1 - Xn-1)Yn. Includes area calculations for 1号地.

Table with 4 columns: 地番, 測点, Xn, Yn, (Xn+1 - Xn-1)Yn. Includes area calculations for 2号地.

Table with 4 columns: 地番, 測点, Xn, Yn, (Xn+1 - Xn-1)Yn. Includes area calculations for 3号地.

Table with 4 columns: 地番, 測点, Xn, Yn, (Xn+1 - Xn-1)Yn. Includes area calculations for 4号地.

Table with 4 columns: 地番, 測点, Xn, Yn, (Xn+1 - Xn-1)Yn. Includes area calculations for 5号地.

Table with 4 columns: 地番, 測点, Xn, Yn, (Xn+1 - Xn-1)Yn. Includes area calculations for 位置指定道路用地.

Table with 4 columns: 地番, 測点, Xn, Yn, (Xn+1 - Xn-1)Yn. Includes area calculations for 其他①.

Table with 4 columns: 地番, 測点, Xn, Yn, (Xn+1 - Xn-1)Yn. Includes area calculations for 其他② (後退道路).

Table with 4 columns: 地番, 測点, Xn, Yn, (Xn+1 - Xn-1)Yn. Includes area calculations for 其他③.

Table with 4 columns: 地番, 測点, Xn, Yn, (Xn+1 - Xn-1)Yn. Includes area calculations for 開発道路.

合計 1510.91 m²

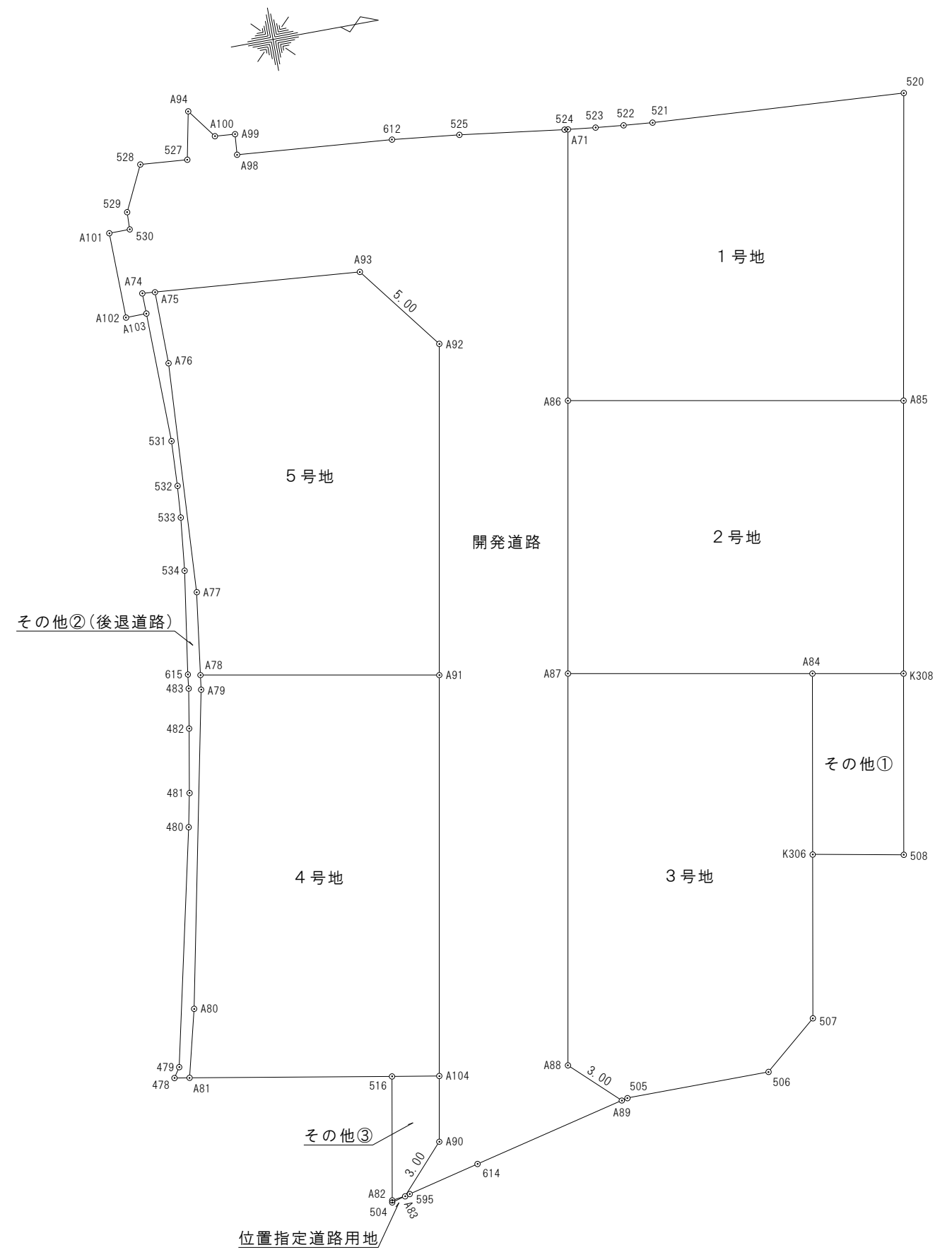


Table with 2 columns: 図面名, 丈量図; 縮尺, 250分の1; 作成年月日, 令和3年7月12日; 作成者, 高松市川島本町288番地1 土地家屋調査士 横井智