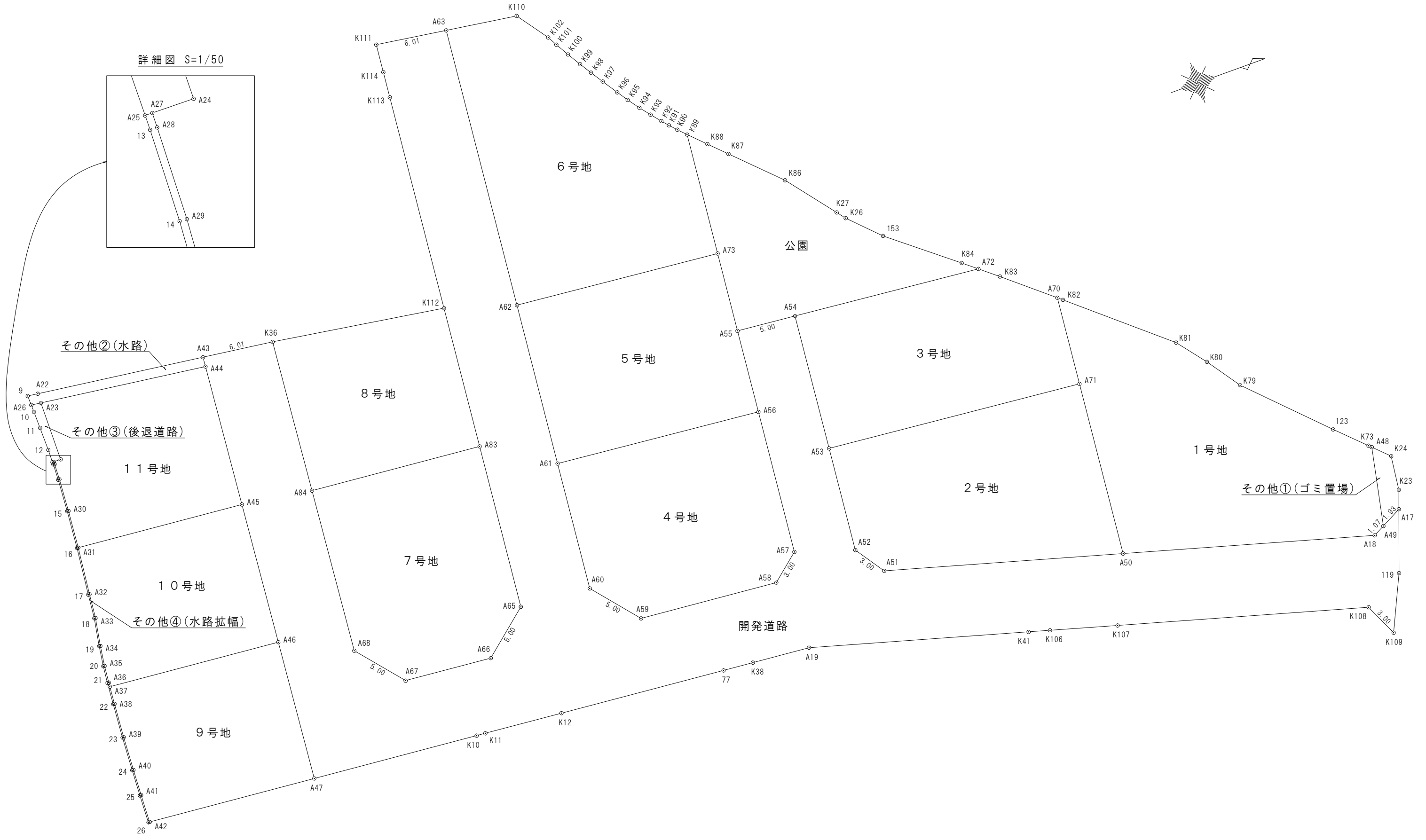
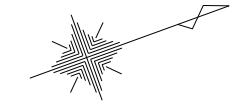
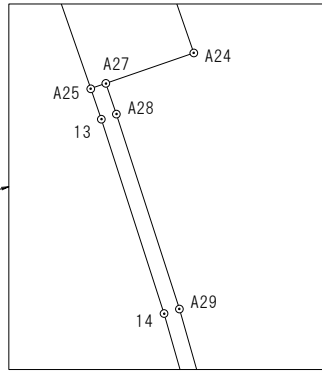


詳細図 S=1/50



図面名	丈量図(1/2)
縮尺	300分の1
作成年月日	令和2年11月4日
作成者	高松市川島本町288番地1 土地家屋調査士 横井 智

座 標 求 積 表

Table with columns: 地番, 1号地, 測点, Xn, Yn, (Xn+1 - Xn-1)Yn. Includes data for points A70 through K82 and summary rows for 倍面積, 面積, and 地積.

Table with columns: 地番, 2号地, 測点, Xn, Yn, (Xn+1 - Xn-1)Yn. Includes data for points A53 through A71 and summary rows for 倍面積, 面積, and 地積.

Table with columns: 地番, 3号地, 測点, Xn, Yn, (Xn+1 - Xn-1)Yn. Includes data for points A54 through A72 and summary rows for 倍面積, 面積, and 地積.

Table with columns: 地番, 4号地, 測点, Xn, Yn, (Xn+1 - Xn-1)Yn. Includes data for points A61 through A56 and summary rows for 倍面積, 面積, and 地積.

Table with columns: 地番, 5号地, 測点, Xn, Yn, (Xn+1 - Xn-1)Yn. Includes data for points A62 through A73 and summary rows for 倍面積, 面積, and 地積.

Table with columns: 地番, 6号地, 測点, Xn, Yn, (Xn+1 - Xn-1)Yn. Includes data for points A63 through K110 and summary rows for 倍面積, 面積, and 地積.

Table with columns: 地番, 7号地, 測点, Xn, Yn, (Xn+1 - Xn-1)Yn. Includes data for points A84 through A83 and summary rows for 倍面積, 面積, and 地積.

Table with columns: 地番, 8号地, 測点, Xn, Yn, (Xn+1 - Xn-1)Yn. Includes data for points K36 through K112 and summary rows for 倍面積, 面積, and 地積.

Table with columns: 地番, 9号地, 測点, Xn, Yn, (Xn+1 - Xn-1)Yn. Includes data for points A37 through A46 and summary rows for 倍面積, 面積, and 地積.

Table with columns: 地番, 10号地, 測点, Xn, Yn, (Xn+1 - Xn-1)Yn. Includes data for points A31 through A45 and summary rows for 倍面積, 面積, and 地積.

Table with columns: 地番, 11号地, 測点, Xn, Yn, (Xn+1 - Xn-1)Yn. Includes data for points A23 through A44 and summary rows for 倍面積, 面積, and 地積.

Table with columns: 地番, 開発道路, 測点, Xn, Yn, (Xn+1 - Xn-1)Yn. Includes data for points A43 through K36 and summary rows for 倍面積, 面積, and 地積.

Table with columns: 地番, 公園, 測点, Xn, Yn, (Xn+1 - Xn-1)Yn. Includes data for points K89 through K88 and summary rows for 倍面積, 面積, and 地積.

Table with columns: 地番, その他①(ゴミ置場), 測点, Xn, Yn, (Xn+1 - Xn-1)Yn. Includes data for points A48 through K24 and summary rows for 倍面積, 面積, and 地積.

Table with columns: 地番, その他②(水路), 測点, Xn, Yn, (Xn+1 - Xn-1)Yn. Includes data for points 9 through A22 and summary rows for 倍面積, 面積, and 地積.

Table with columns: 地番, その他③(後退道路), 測点, Xn, Yn, (Xn+1 - Xn-1)Yn. Includes data for points A26 through A23 and summary rows for 倍面積, 面積, and 地積.

Table with columns: 地番, その他④(水路拡幅), 測点, Xn, Yn, (Xn+1 - Xn-1)Yn. Includes data for points A25 through A27 and summary rows for 倍面積, 面積, and 地積.

合 計 4012.60 m²

Table with columns: 図面名, 丈量図(2/2), 縮尺, 300分の1, 作成年月日, 令和2年11月4日, 作成者, 高松市川島本町288番地1 土地家屋調査士 横井 智